



 © Roel Louwers

MAZDA MX-5 CUP

Welcome



Race Director Team:

Jaap Molmans / Kees Koning
Max Braams / Bobbe Veldkamp / Annemieke Veldkamp

Stewards:

Gerard du Pre / Eric Noort
Martijn Bins/ Stefano Goossens

Secretary of the meeting:

Ria Waterreus

Technical delegate/Scrutineer:

Will Buijs
Sven de Graaff


Team Relations:

Eric de Jongh

Organisation:

Renata Aartsen
Dick van Elk
Rik Heesters





Sportity

For direct event information please download the Sportity app and insert this password:

Mazda2023
VRM2023

Time schedule V11



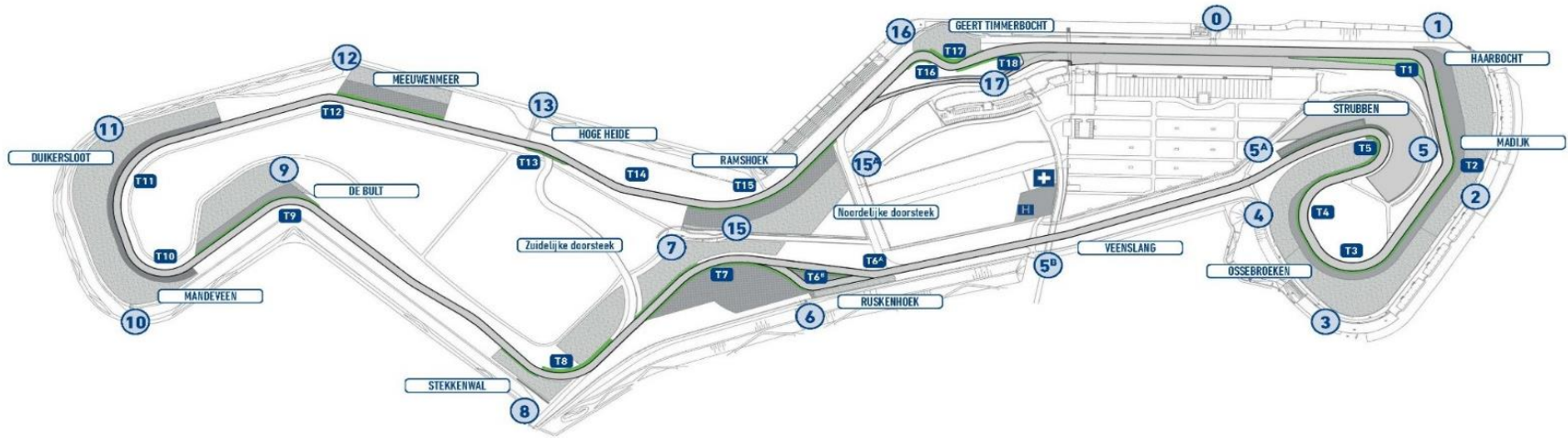
Review Spa Racing Festival & earlier races



- Red Flag during race
- Driving Standards races
- Mandatory Rain light
- Driving standards qualification / slow driving
- Leaving the track with an advantage



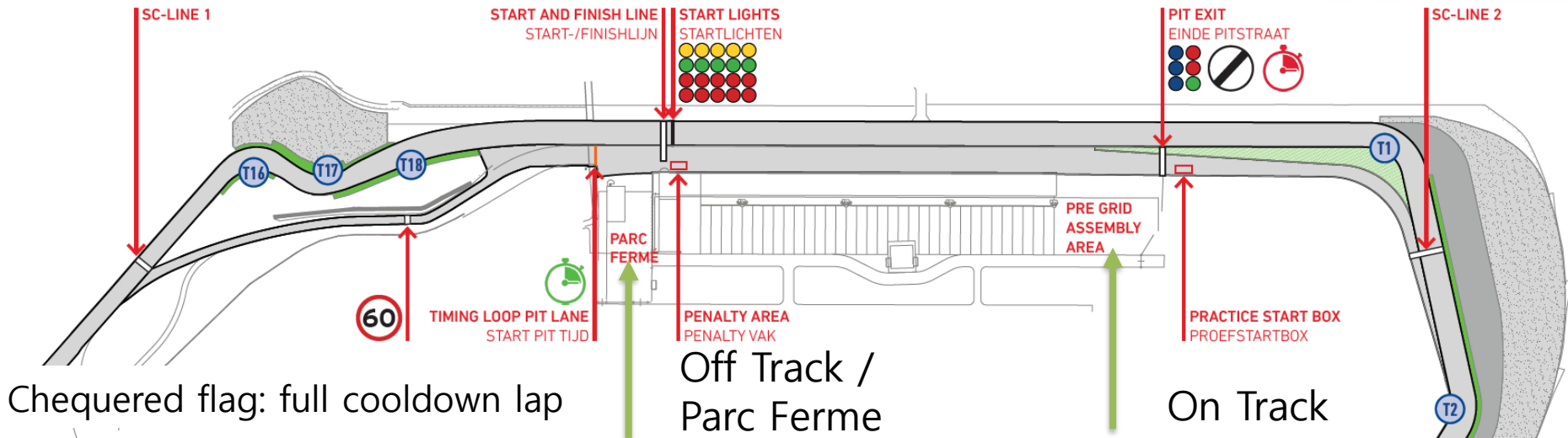
The Circuit



Circuit Assen

- Length: **4.555** meter
- Direction: **Clockwise**
- Start: **Standing start**
- Pole Position: **Left Side**
- Practice starts: **Pit-Exit**
- Penalty Area: **Underneath Podium,**
- Pitlane Speed: **60 KM/H**

Logistics - Training

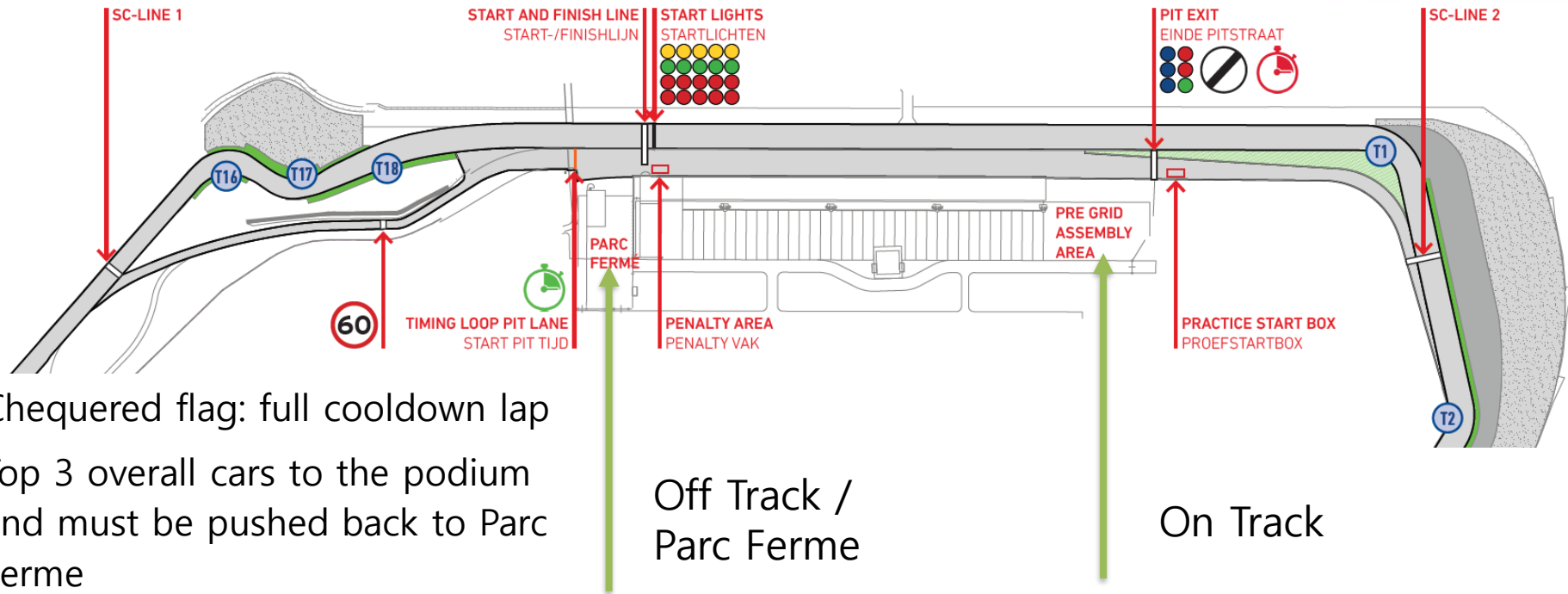


All cars on the paddock must be at the pre- start area **20 min. before** the official session starting time

Trolleys follow the same route

Cars in pitbox – please be reminded to be out pitbox at least one minute before the starting time mentioned on the screen for your datalogger

Logistics - Races



- Chequered flag: full cooldown lap
- Top 3 overall cars to the podium and must be pushed back to Parc Ferme

All cars must be at the pre-start area **20 min. before** the official session starting time

To the grid (shortcut)



Pit in:

First detection point on the line

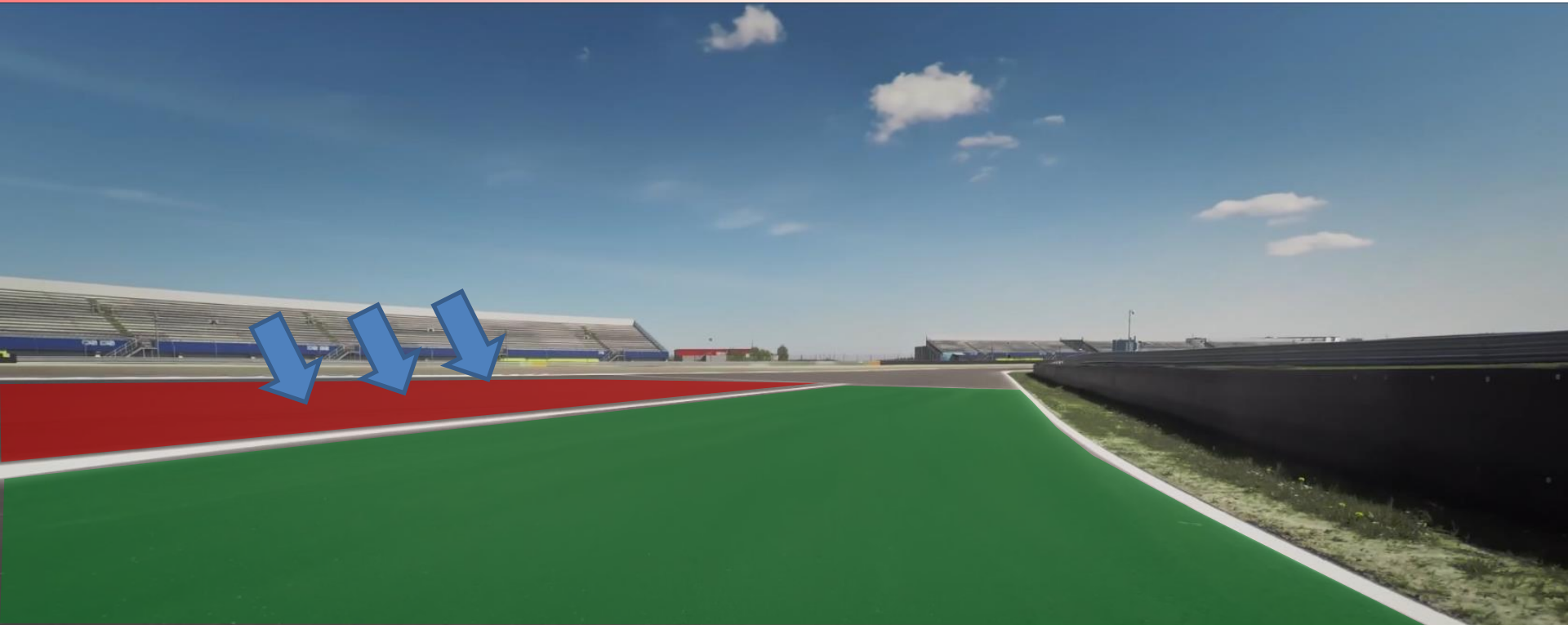


Pit out

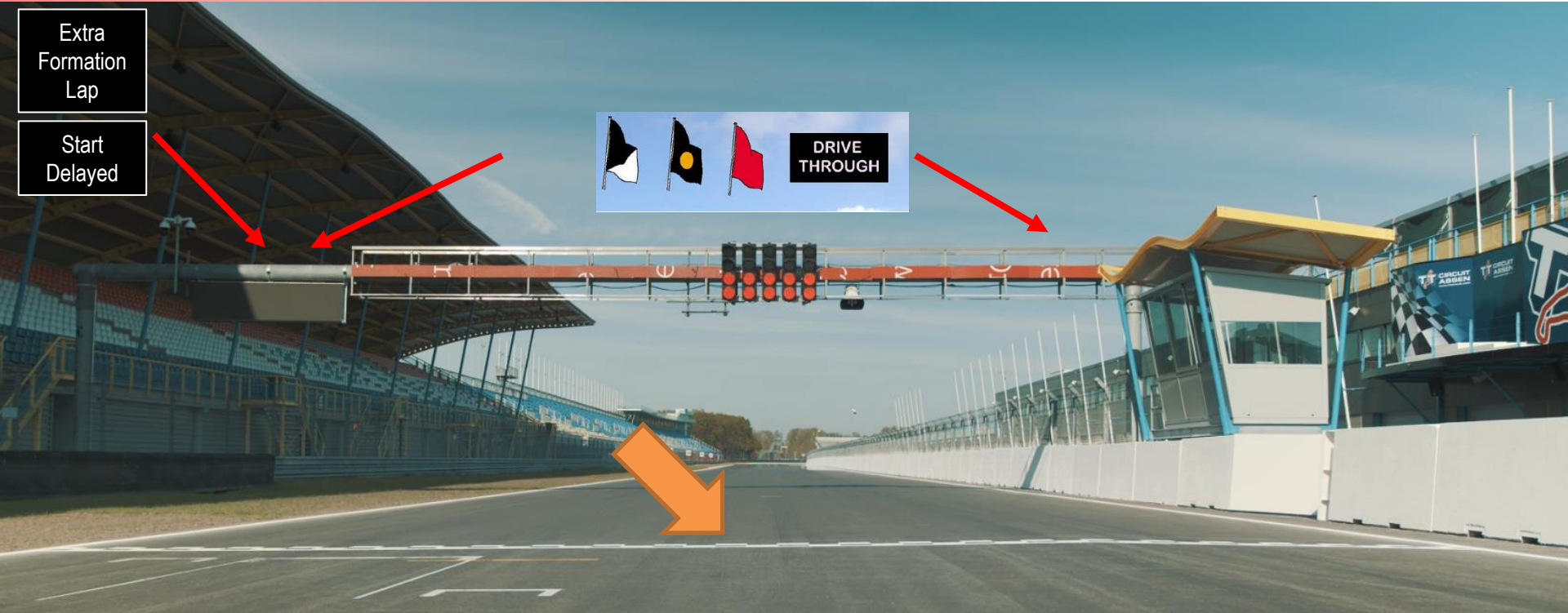
Practice starts area



White Line Pit Exit



Finish Control Line | Signalling Area



Penalty Box



- Technical Flag (Meatball)



- Black Flag



~~- Warning Flag~~

Basics – Starting Procedure

- Know your grid position
- No tyre trolleys on the grid
- Wait for the warm-up lap to start (green flag & green lights in gantry)
- Grand prix start



Start delayed

- In the occasion of problems on the grid or during the formation lap, the Race Director may decide **not** to start the race. **The start will be aborted.**
- In this case, the red lights on the starting gantry remains red and orange lights will flash.
- The sign **Start Delayed** will be displayed
- A new formation lap will follow, when the green lights on the gantry have been activated.

NO START OF THE RACE

Start delayed



MYLAPS RaceLink Club

Mandatory two-way communication device for this event

It does NOT replace your current timekeeping transponder.

Make sure that the timing transponder is fitted correctly!

Race Control can see:

- Live GPS location
- Live GPS speed

Race Control can send:

- Full Course Flags
- Sector Flags (no blue)
- Personal Flags

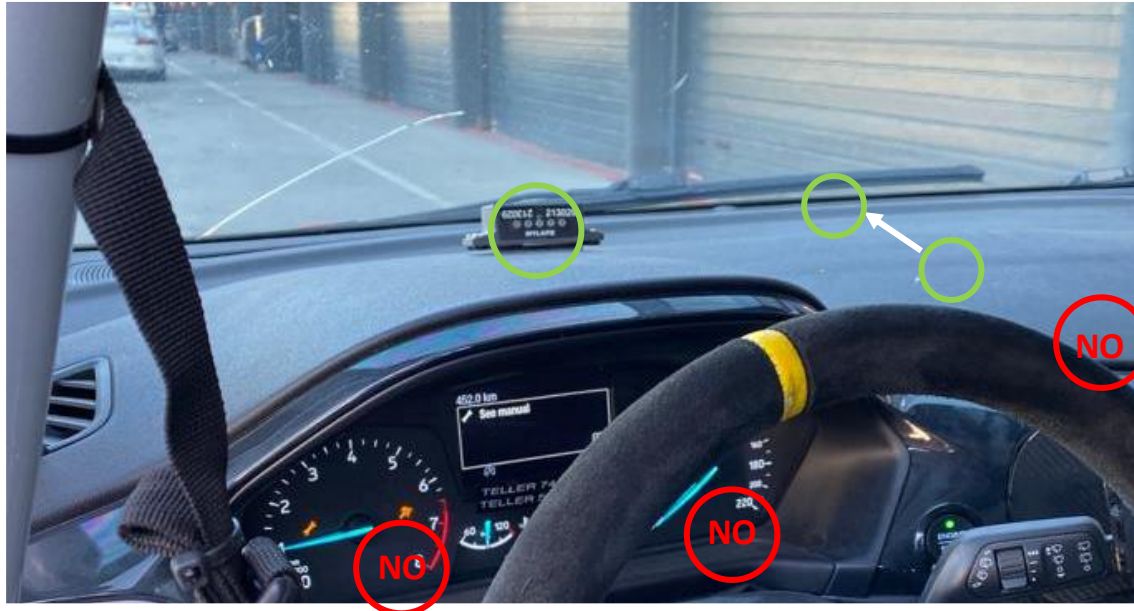


Fit the Racelink on your (clean) dashboard, and make sure the driver can see the LED's on the front of the Racelink. Additional/alternative installation tips are shared via the Sportity app.

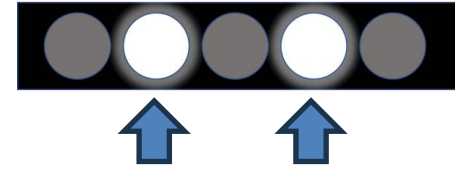
Note that all cars will have a Racelink Club. The Racelink is an *assisting* notification device. So...Do you see a Racelink blinking? Look at the marshal post!

MYLAPS RaceLink Club

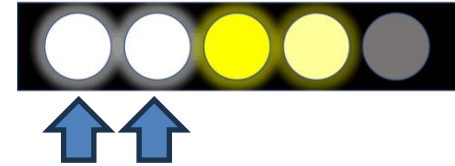
Fit the Racelink on your (clean) dashboard (or an alternative location), and make sure the driver can see the LED's on the front of the Racelink. Additional installation tips are shared via the Sportity app.



SC



FCY



After the last session of each day the RaceLink will be collected in Parc Fermé and you receive it before the first Session of the next day

DIGIFLAGS



Flags and Digiflags have the same meaning

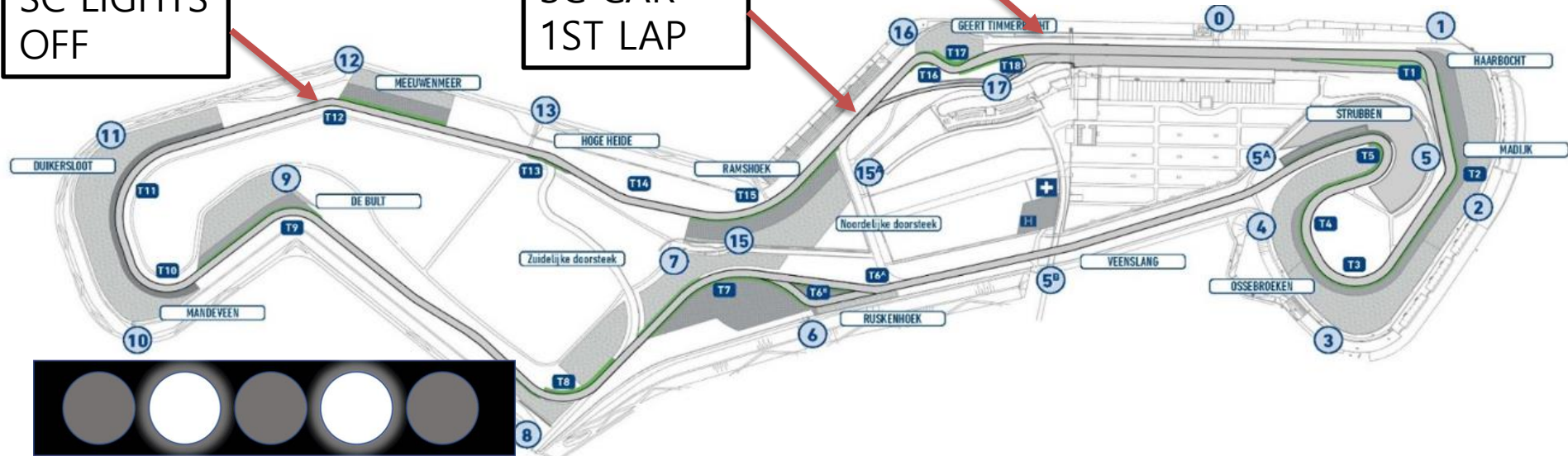
In case of contradicting flags: the safety flags go first

Safety car

SC LIGHTS
OFF

SC CAR
1ST LAP

SC CAR
POSITION



SAFETY CAR PROCEDURE

YELLOW FLAGS + BOARDS "SC"

NO OVERTAKING

WATCH OUT FOR INTERVENTION VEHICLES

SAFETY CAR ENDING

Restart from the control line

1 Single waved green flag at the control line

Overtaking allowed after the control line

FCY



- Release the throttle to 80 KpH
- Don't brake on a straight
- No Overtaking
- Watch out for interventions vehicles on track
- Full Track green: Start racing immediately

Flag Signals – Red Flag



Free Practice & Qualifying
All cars **into pitlane**

- Reduce Speed. Be Prepared to Stop!
- Session is Suspended
- Follow Marshall's Instructions

Race

All cars in 1 line stop around
grid position 10

Track limits

In accordance with the rules of the FIA International Sporting Code – Appendix L, the **white lines define the track edges**

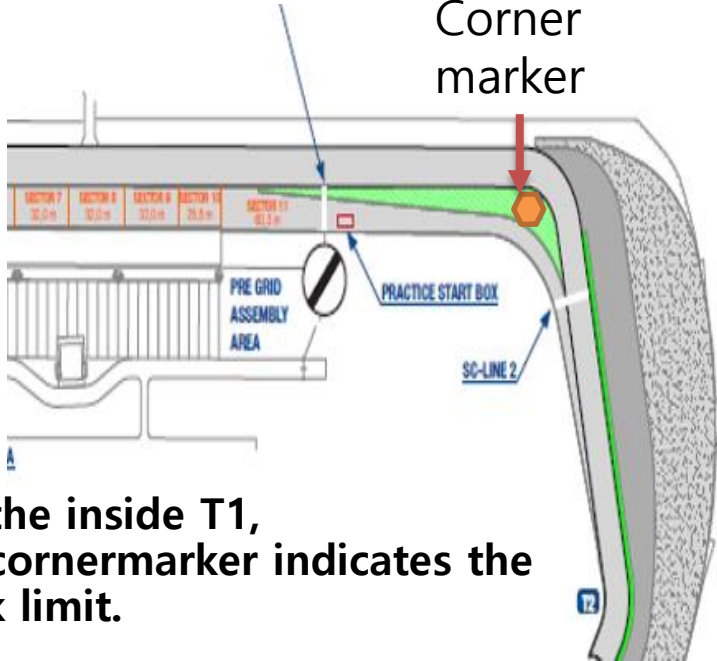
Drivers must use the track at all times and **may not leave the track without a justifiable reason**. For the avoidance of doubt, the white lines defining the track edges are considered to be part of the track but the kerbs are not.

Should a car leave the track for any reason, the driver may rejoin. However, this may only be done when it is **safe to do so and without gaining any lasting advantage**. A driver will be judged to have left the track if no part of the car remains in contact with the track.

Track Limits T1

Track limit after red-white-blue curb

Corner
marker



**For the inside T1,
the cornermarker indicates the
track limit.**

**If the cornermarker is removed,
Appendix L applies.**

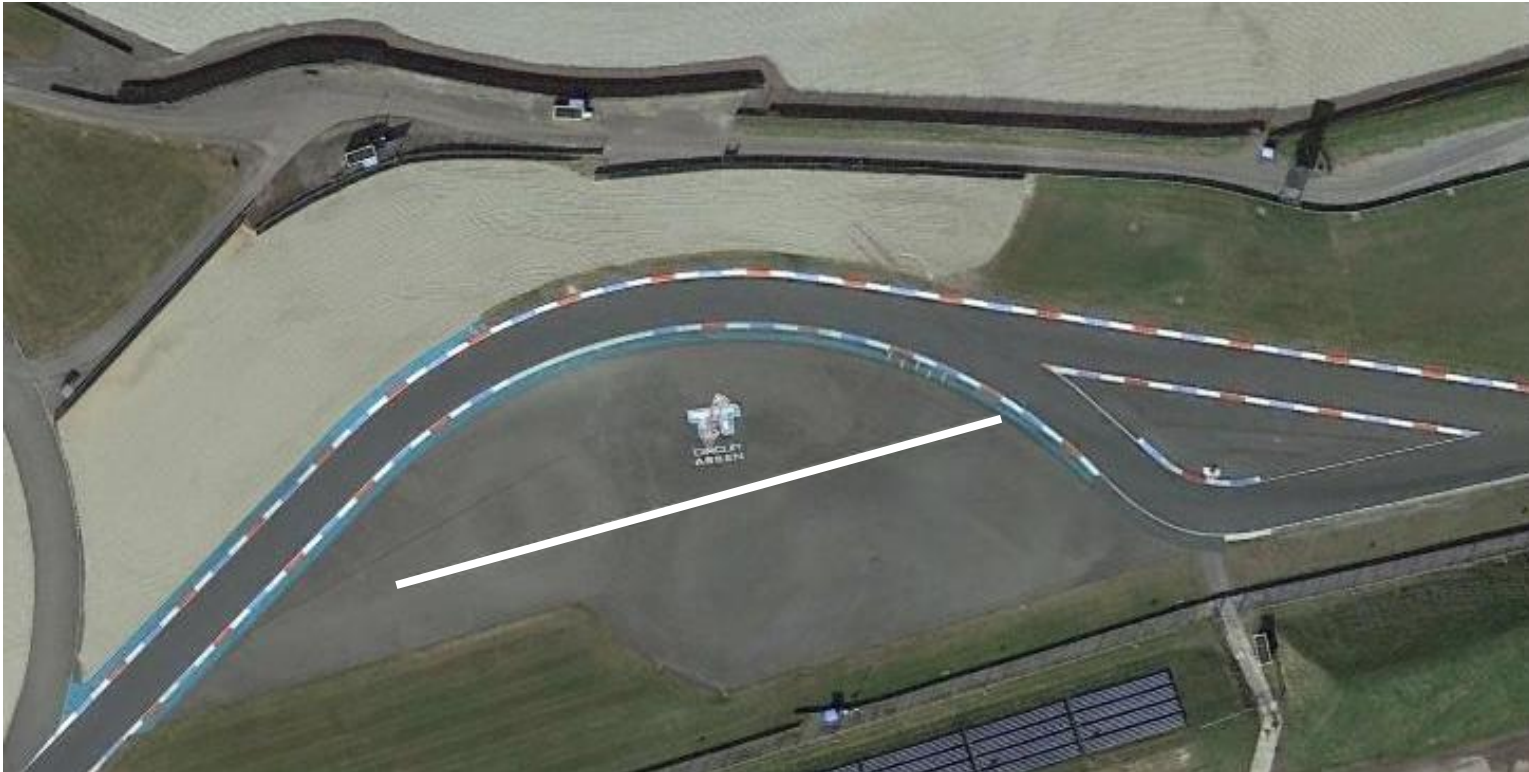


Track Limits T6/T7



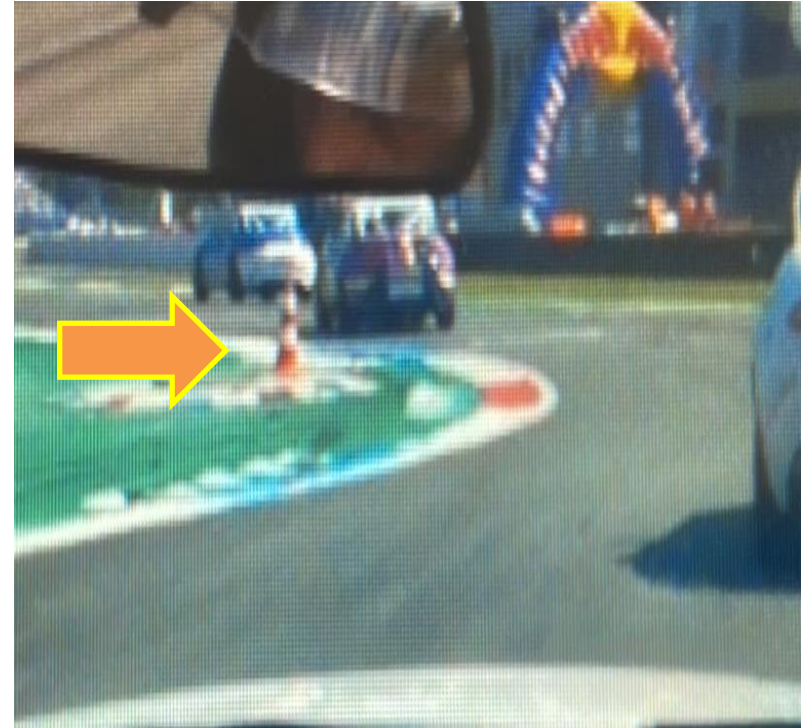
The cornermarker(s) indicate the track limits.
If the cornermarker(s) are removed, Appendix L applies.

Route at T6/T7



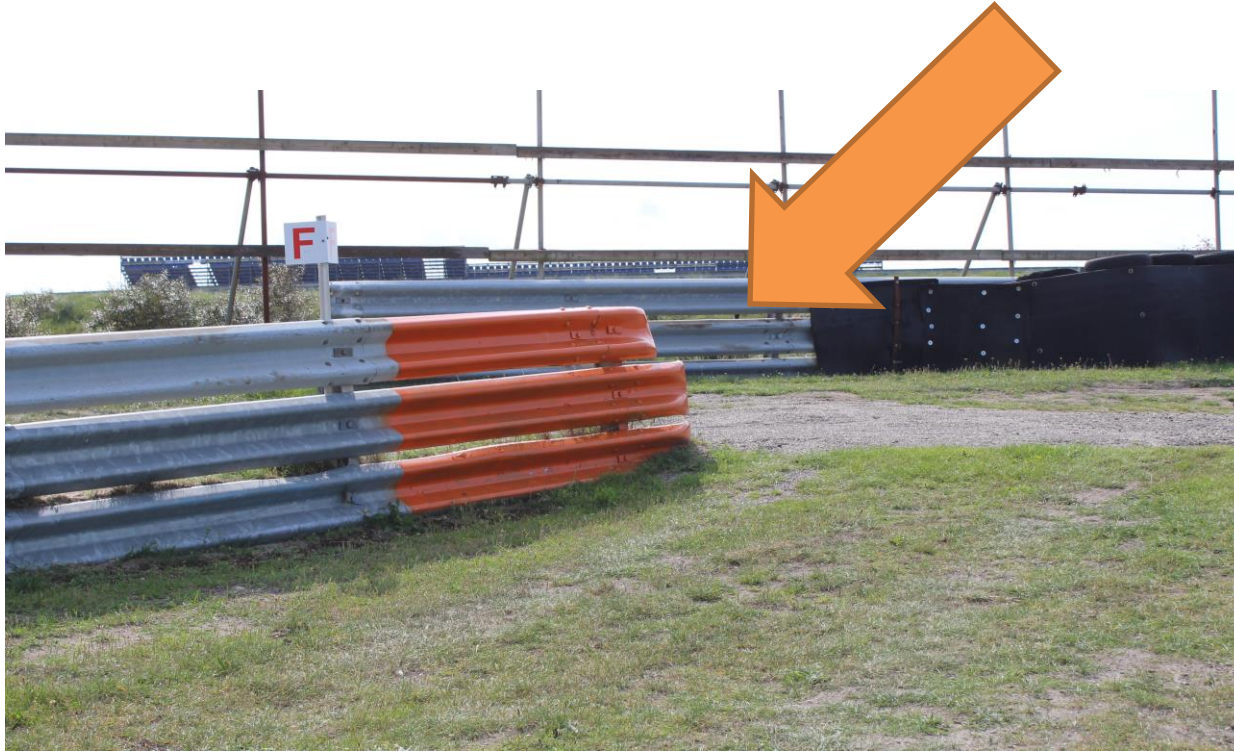
Drivers must stay on the **left side of the WHITE line**, and merge **in safely and without any advantage**

Track Limits T15/T16



The cornermarker(s) indicate the track limits.
If the cornermarker(s) are removed, Appendix L applies.

Safety – Stopping on Track



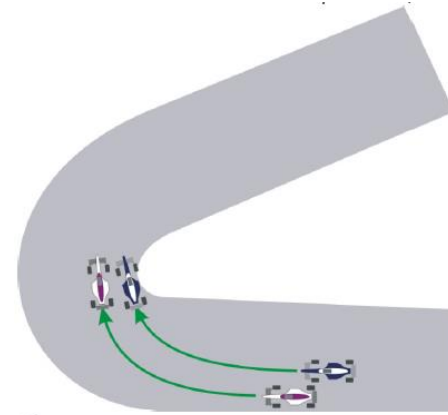
- An orange armco means an opening in the guardrail.
- It's a safe place to park your car after a technical defect
- Try to park your car at RHS

Driving Conduct

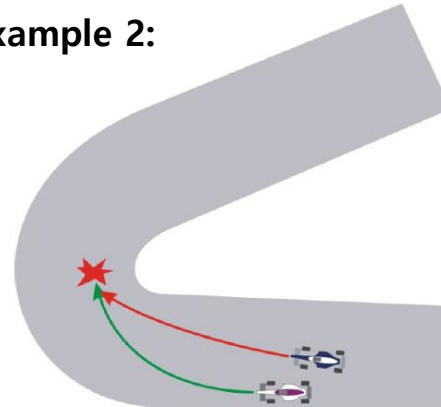
A penalty may be applied if (causing a collision)

- The inside car overshoots the corner and crashes in the outside car (goes too fast and causes a collision)(example 2)
- The outside car does not leave space for the inside car. The Outside Car must leave at least one car width space inside, allowing the attempt to pass
- (example 3)

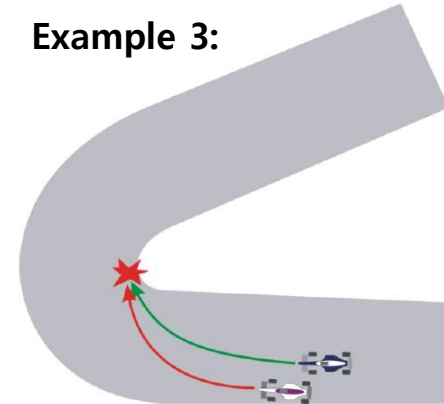
Example 1:



Example 2:



Example 3:



Driving Conduct

Examples

- Jumpstart
- Ignoring flag signals or Instructions from marshals
- Overtaking under yellow, red or after chequered flag
- Speeding under FCY, Pit lane, Yellow.
- Dangerous driving behaviour with or without contact
- Unsportsmanlike behaviour
- Change direction more than once
- Take advantage of an unclear situation
- Track limits

Driving Conduct

Penalties will be applied based on a fixed penalty list

- Deleting (fastest) lap time(s)
- Time penalty
- Position penalty
- Grid penalty
- Starting from pitlane
- Drive through
- Stop and Go
- Stewards decisions

Penalty can come with extra point(s) on your licence:

5 Points	drop of 3 places on the grid next race
8 Points	drop of 10 places on the grid next race
10 Points	Start from pit lane next race

Questions?



Enjoy your weekend and stay safe